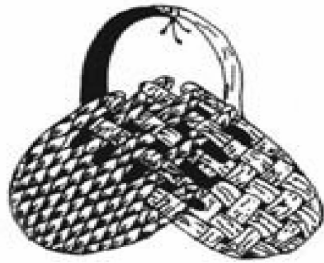


# Great Basin Basketmakers



## Newsletter

September 2007  
Volume 21 Number 9  
Edited by Sallie Moore

Continuing 10,000 Years of Basket Arts

### Editor's Notes

Welcome new members Jean Taylor and Betty Sorensen, both of Reno. Our membership roster has now swollen to 205 members!



**Prior to September's meeting**, the Board will meet at 10:00. At 10:30, the annual program planning meeting will be held. All members are encouraged to attend the planning meeting to provide input for meeting and third Thursday programs for 2008.



The deadline for the 28th annual Governor's Arts Awards for Visual Arts is October 5, 2007. Applicants must be an actively practicing visual artist and must demonstrate professionalism and quality in their art through work samples, resume and proposal. Obtain more information about this opportunity at [www.Nevadaculture.org](http://www.Nevadaculture.org) and/or [fkmmorrow@clan.lib.nv.us](mailto:fkmmorrow@clan.lib.nv.us).



September Meeting (1-2 pm)

### Gourd Baskets:

#### A demonstration on weaving rims on



gourds by  
Molly  
Gardner and  
Cheryln  
Bennett

Learn how to create an interesting and unusual rim or basket top on a gourd. Preparing a gourd for weaving and the placement of holes for spokes as well as cutting of the top and making the opening will be demonstrated. Different weaving techniques, materials to use from waxed linen to vines and finishing a gourd basket will be shown. Weaving on other objects such as tins or pottery will be also be discussed. This will be a fun and interesting program and if you have never tried weaving on a gourd, you won't want to miss this demonstration!

August 2, 2007

## GBB General Meeting Minutes

Submitted by Tish Kendrick



The meeting was called to order by Vice President Joan O'Brien. The minutes were approved as published. The Treasurer gave her report. We presently have 205 members.

Next meeting members are requested to EACH bring one item they made and ideas for the Program Planning portion of the meeting.

The baskets from the show at the Nevada State Museum will be boxed and transported to Vegas. From that show they will be mailed back to individual artists. The drawing for the Jim Santini Native American Basket will be held in CC on Dec. 14<sup>th</sup>. The preordered catalogs of the show will be available next meeting. (cost \$5)

Books donated by Pat Winnie have been placed in our library, and duplicated donated to the Northwest Library as they are starting a basketry collection. Thanks to Pat Winnie for her generous donation.

New brochures have been designed (thanks to Tia) and printed and are available.

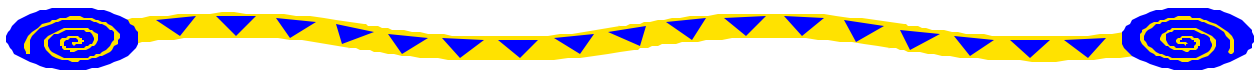
The Nominating Committee Report was given. There are still offices that need filling.

The Alpine county library in Markleeville would like a small exhibit in Nov Contact Paula P.

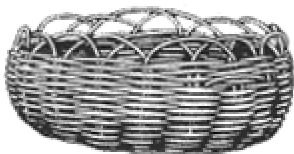
The present officers and chairpersons are being asked by the Board to write a job description to help incoming officers/chairs. Hints, addresses, expertise and ideas would be appreciated.

Cindy K., owner of the Reno Bead Shop on Plumas in Reno, is planning Christmas sale of "Beads and Baskets" to take place in her shop with items to be submitted before Thanksgiving. She has invited GBB members to participate. More details to come later.

There followed an outstanding program presented by Mary Lee F. and Claudia K. Their efforts were greatly appreciated



### BASKET RAFFLE



The drawing for Jim Santini's donated basket will be held at the Nevada State Museum, Carson City, NV on December 13<sup>th</sup> at 11 a.m. Tickets may be purchased at our September Co-Op sale, and in the gift stores of both state museums. Tickets are ONE ticket for \$1.00, SIX tickets for \$5.00.

## Natural Weaving Tip From Susan Stewart

One of the most important and versatile plants for many western native people was the Tule, *Scirpus validus*. This remarkable plant, found in wet, marsh areas along with the cattail can grow to ten feet high. Their round stalks are almost hollow and were used for making boats, houses, mats; duck decoy bodies and bags for collecting eggs. In addition, the white base of the stem was also eaten. Margaret Wheat's *Survival Arts of the Primitive Paiutes* gives wonderful photos and descriptions of the many uses made of them. In addition, the Tule provides shelter for many birds and amphibians, which became food for the native people.

If you are going to use tule for a project, summer to fall is the best time to collect it, while they are still green, erect and strong. It is best to cut them close to the ground whether they are above or below water and bundle them about every 1-2 feet so they don't bend. If they are dried in the sun they will turn beige and if dried in the shade will retain some of their green color. Though they can be stored, sprayed and used later, they are best if used shortly after harvesting. Enjoy trying these native staples!

---

## Cindy's Natural Weaving Notes



As all basket makers know, late summer is the time to make a thorough search of garden beds for ready weaving materials. One plant that requires a strong pruning for healthy growth and also lends itself to all sorts of basket projects is the Yucca plant. From the Agavaceae family, there are over forty species of Yucca. In the great basin region, you will mostly see Adam's Needles (4 to 5 foot flowering spikes above the plant) or Banana Yucca (flowering spikes at ground level within leaves).

To be honest, I've always had a love - hate relationship with my Yucca plants. Sure, they are drought tolerant and pretty enough. But their leaf tips are sharp and never fail to attack me while I am working in the garden. My animosity evaporated, however, when I discovered that I could use their leaves and stalks to make baskets. The long spiky leaves of the Yucca can be plaited, split, coiled or made into cordage. Unlike daylilies or irises, you can remove Yucca leaves while still green and not interfere with the feeding cycle of the plant. The long leaves grow in a rosette pattern from the main stem and are very strong. Always remove the leaves from the bottom layer of the rosette by either twisting or cutting them off with sharp gardening shears. If you take them from the top, you can destroy the plant. Be careful as you do this - Yucca leaves have very sharp edges and the tips can break skin when they poke you. Dry the leaves for several days until all the moisture is gone. If you dry them in a dark place, they will retain more of their beautiful blue/green color. Soak lightly before using. You can slice the tip and the wide end off for easier weaving. Hopefully you will have as much fun as I did discovering the hidden potential of this beautiful desert shrub

---

## Tish's Trusty Tip

If you have trouble with your flat reed cracking or splintering when you are upsetting your basket or doing a fold and tuck, moisten the spoke and try pinching the reed at the folding point with your round nosed pliers. It helps!



# Nominating Committee report

Betty Hulse, Tish Kendrick, and Pat Morfoot

The Nominating committee extends thanks to Margaret Marshall, Molly Gardner, and Tia Flores for serving several years in GBB leadership positions. We are grateful to them for sharing their talents and time.

Although GBB has over 200 members, about half of them are from out of town, there is another group who are not active, and a third group which are active participants. So the pool of active, worker bees is not large in numbers. Several of these worker bees have devoted many hours of their time and energy in the past years and we are grateful and give our thanks to all of them. The committee is grateful to several members have volunteered to serve on committees, but we are lacking a chair in a few important areas. We urge everyone to consider how he or she can participate in GBB with his or her leadership.

The Nominating Committee proposes the following for 2008 officers and committee chairs. Note, not all the positions have been filled. At the September meeting, there will be an opportunity for further nominations. Please contact the individual before you nominate them for any position.

- ?? Board of Directors, continuing members: Mary Lee Fulkerson, Karen Rosselli, and Eileen Brilliant, Carol Thomas, Tish Kendrick
- ?? Board of Directors, new members: Pat Morfoot
- ?? President: Joan O'Brien
- ?? Vice-President
- ?? Secretary: Malinda Parks
- ?? Treasurer: Sandy Zoerner
- ?? First Thursday Meeting Programs: Karen Winberg
- ?? Third Thursday Workshops: Carol Thomas, Joan O'Brien co-chairs
- ?? Special Teacher Workshops: Tish Kendrick
- ?? Saturday Workshops: Cheryl Smith
- ?? Newsletter Editors: continuing, Tia Flores, Sallie Moore, Sandy Zoe new, Cindy Kinerson
- ?? Newsletter Distribution/Membership Rooster: Pat Morfoot, Kathleen Hayes
- ?? Publicity:
- ?? Exhibits:



---

## A HOLIDAY SALE

Cindy Kinerson, a GBB member, has invited all GBB guild members to participate in a holiday show and sale at the Reno Bead Shop and Art Gallery, 542 Plumas Street, from November 22<sup>nd</sup> through December 31<sup>st</sup>. This holiday show, "A Bead Runs Through It", will be open to all fiber arts, baskets, gourds, papermaking, jewelry, beadwork, holiday items, etc. This is a great opportunity for our multi-talented and creative members to showcase their art...and it would be a nice "challenge" (but not necessary) to incorporate a BEAD someplace in each piece of your artwork. There will be table, shelf and glass jewelry case display areas. Please note that wall space is limited. The consignment split for the show will be 70/30% - and checks will be ready for the artist when they pick up unsold artwork.

The next newsletter will include GBB forms and delivery information for your artwork to the gallery. Committee: Margaret M., Karen R., and April B



## Developing your own Style

(From a talk by Sharon Robinson, author of "Pine Needle Basketry")

Developing your own style is the most important part of what you do. Of course you need to take workshops and read books, for they inspire new ideas and techniques. Just remember that you have a lifetime of experiences that make you one of a kind. Why go outside of what you do, when you are your own treasure chest?

How to get there:

Be willing to make mistakes and know that no one cares how you're doing it. YOU have to care. Work hard. Remember Hopalong Cassidy's tenacity in "getting his man". Louise Nevelson never stopped working, day and night.

What do you love? What are you good at? What techniques do you do well? Know that most things have more than one right answer.

Make an appointment with your work and try to critique it. Practice by looking at what other people do. If you can describe their work, you can do this with your own.

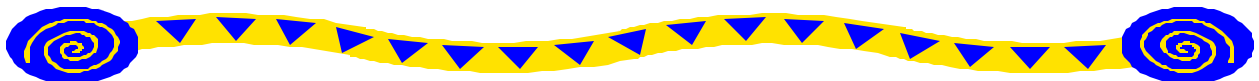
Ask yourself, "are there any characteristics that are always present in my work?" (i.e., detail, fantasy, color, message, etc.)

Give your work the credit it deserves and be proud of it. You might even speak well (brag) about it. Tolstoy said in war the ones who could yell and fight the loudest won.

Do you have studio limitations that lead you to a certain style? Pioneer women invented piecework because they had no fabric and no studio; only their laps.

Last month's newsletter talked about calling on your intuition, that gut feeling you can call upon any time you choose.

And finally, a thought from Rumi: "Out beyond ideas of wrongdoing and rightdoing, there is a field. I'll meet you there."



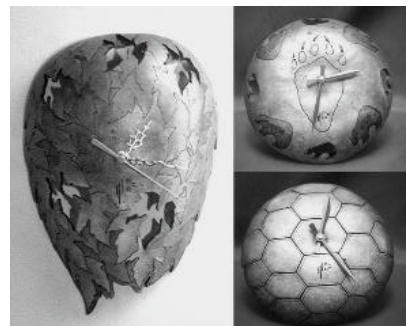
## Third Saturday Workshop

Using the gourd as a foundation, we will design, decorate and create a functional yet beautiful wall clock. The designs will be pyrographed onto the gourd and dyes will be used to add color. Each clock will be one of a kind. All materials, including the clock parts, will be provided.

Contact information: [tia@calabazaart.com](mailto:tia@calabazaart.com) or 775.846.9592

Class Fee: \$15.00

Materials Fee: \$20.00



# INTERWOVEN 2007

Nevada State Museums,  
Carson City to Las Vegas

GBB's exhibition at the Nevada State Museum in Carson City ended Sunday, August 5. All of our artwork has been boxed and transported to the Nevada State Museum and Historical Society, Las Vegas. There, the total exhibition will be restaged and open to the public from September 7 through November 18, 2007. On opening reception is scheduled for September 7, 2007, 5:30 to 7 p.m. The Las Vegas museum is located at 700 Twin Lakes Drive. Phone: 702-486-5205, website: [www.nevadaculture.org](http://www.nevadaculture.org).



---

## July Board Retreat

After we sadly accepted Billie W.'s resignation, we talked about Eileen's poser: What drew you to GBB in the first place, and what kept you coming back? (We suggest you all think this one over...it's very thought-provoking.)

We will ask for a three-person Nominating committee every year in June, to be chaired by the vice-president. Nominating committee will fill the positions of all officers and Standing committee chairs. Standing committees are: Meeting Program, Third Thursday Workshops, Special Teacher Workshops, Saturday Workshops, Newsletter Editors, Publicity, Exhibit Chair, Newsletter distribution/Roster, Librarian.

Beginning in 2008, these people will serve one year terms, renewable up to four terms. This limit may be waived at mutual agreement with the Board. We recommend that committee chairs choose one or two people to join their committee—for ideas, for part of the work, to be a potential apprentice.

To save paperwork and confusion, we grouped committees into categories according to the tasks involved with each committee.

The Board of Directors shall consist of six members, one being a past GBB president whenever possible. Terms are two years, which can be renewable up to two terms (four years). We will meet every two months.

As we establish policies, we'll store them all in a separate book for future reference. The Board is gathering job descriptions from officers and Standing Committee chairs to include in the book.

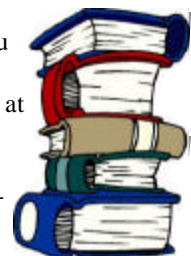
Carol T. kindly offered to audit our books (to meet state requirements) before the new treasurer begins her term.

All of this may seem tedious, but we are getting a handle on how GBB is organized. And after 20 years, it's about time!

---

## CHECK IT OUT !!!

Have you ever looked at the basketry books in our library that are written all in Japanese? No, you do not need an interpreter to use them! The dimensions are in centimeters. The illustrations show you how to do everything step-by-step. The diagrams are excellent. It is just like having a teacher at hand to show you exactly what you have to do next. Mary Lee told me that she learned how to weave using Japanese books. I, myself, own five different Japanese books. The baskets run the gamut from the most practical baskets to decorative baskets to weaving funky do-dads. Be experimental and daring and CHECK IT OUT!

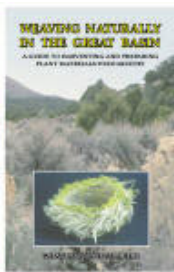


# from the gourd patch

With September comes the long awaited autumn, when the sun and the moon are in harmony and the earth becomes balanced once again. The days are becoming shorter, there is a chill in the morning air and the gourds on the vine are beginning to mature.

Also in September comes the annual Folsom Gourd Festival. This year the festival is on September 29 & 30 at the Folsom City Park on Natoma & Stafford Streets([www.folsomgourdfestival.com](http://www.folsomgourdfestival.com)). On September 27 & 28 are the Pre-Festival Gourd Classes hosted by the Zittel Gourd Farm. They have a variety of classes offered ([www.folsomgourdarts.com](http://www.folsomgourdarts.com)). Treat yourself during this harvesting time and attend the festival.

## "Weaving Naturally in the Great Basin"



The Great Basin Basketmaker's book continues to sell. There are several venues where it is now available locally: Sundance Bookstore, Wilbur May Museum Gift Shop, the Artists' Coop and the Nevada Historical Society. The Nevada State Museum Gift Shop in Carson City also has copies. Statewide it is available at the Churchill County Museum and in Ely at the Renaissance Village. The Gatekeepers Museum in Tahoe City also sells our book. If you know of other places where you think we should have our book for sale, please contact Mary Lee Fulkerson or Betty Hulse

Next Month's Newsletter Editor is: Tia Flores

She can be reached at [tia@gourdearthart.com](mailto:tia@gourdearthart.com) or at 775-846-9592.

Although there are a number of ways contributors may submit information for inclusion in the next newsletter, (e-mail, typed and sent via snail mail for scanning or by phone), **e-mail is the preferred method.** When *submitting* articles for the newsletter, send them as a plain, unformatted text attachment, if possible. PLEASE don't bold, center, italicize, underline, bullet or number. If you have a "yen" to do so, consider becoming one of the newsletter editors! Your submission may be edited for clarity and/or length.



### Great Basin Basketmakers Membership Application/Renewal

Membership Dues: \$20/yr, \$35/2 yrs, \$50/3 yrs. (Renewals due in January)

Date \_\_\_\_\_ Amount: \$ \_\_\_\_\_ New \_\_\_\_\_ Renewal \_\_\_\_\_

Name \_\_\_\_\_

Address \_\_\_\_\_  
\_\_\_\_\_

City \_\_\_\_\_ State \_\_\_\_\_ Zip \_\_\_\_\_

Telephone \_\_\_\_\_ Email \_\_\_\_\_

Send this completed form and check payable to **Great Basin Basketmakers** and mail to:  
**Great Basin Basketmakers \* P. O. Box 11844 \* Reno, NV 89510-1844**

Great Basin Basketmakers  
Post Office Box 11844  
Reno, Nevada 89510-1844

Non-Profit Org  
U.S. POSTAGE  
PAID  
Reno, Nevada  
Permit 300

"Remember, the light is always in your eyes, joy in  
your heart, and creativity abounds in your hands."

Sufi S. Aying

September 2007  
Time Dated Material

## Great Basin Basketmakers

Established January 1987

- ? Meet the first Thursday of each month at the [Northwest Library](#), 2325 Robb Drive, Reno, NV 89523.
- ? Business meetings commence at 11:00 a.m. and generally last about an hour. Potluck lunch is followed with "Show and Tell" and a program starting at 1:00 p.m.
- ? Membership dues for Great Basin Basketmakers are \$20/yr, \$35/2 yrs, \$50/3 yrs. Dues are to be paid annually in January. Membership includes monthly newsletter, access to large library and reduced workshop rates.

Please direct address changes, membership dues,  
and requests for membership to Pat Morfoot  
4747 Pradera St., Sparks, NV 89436-1649  
775-626-8108

[www.greatbasinbasketmakers.org](http://www.greatbasinbasketmakers.org)

### Our Mission Statement

The main focus of the Great Basin Basketmakers is to make baskets, to learn everything possible about the traditions and techniques of basketry and to pass this knowledge along to others.

